

Hybrid Weft

Lightweight and Flexible

Providing long-lasting, comfortable wear, our **100% Remy Hybrid Weft** delivers seamless blends with tailored length and volume.

FEATURE & BENEFITS

- Customizable seam that can be cut to any width
- No return hair for a smooth, comfortable wear
- Anti-shedding technology for lasting quality
- Hair is sewn onto a platform of beads using a needle and thread

BEST FOR

- Natural-looking blends
- Laying multiple wefts without the bulk
- Secure wear with full movement

HAIR SPECIFICATIONS

LENGTH	18" 22"
PACKAGING	18" 2 Wefts 28" Width 60 Grams 22" 2 Wefts 30" Width 80 Grams
MOVE-UPS	6-8 weeks
INSTALLATIONS	1-2 hours



How to have a successful install

You have to understand your client

CLIENT CONSULTATION

A thorough client consultation sets the foundation for a successful extension experience by aligning expectations around results, maintenance, and longevity while prioritizing the health of the natural hair. Through clear communication and expert guidance, it builds trust and confidence, ensuring a seamless, natural-looking result and a sustainable extension journey.

Steps for a successful consultation:

1. Assess hair type, density, and scalp health
2. Determine desired look and lifestyle needs
3. Match the method to hair type, lifestyle, and desired results
4. Color match to create a seamless blend
5. Educate on maintenance and aftercare
6. Outline financial commitment and service plan

DONNA BELLA

HAIR EXTENSIONS

BEFORE

AFTER



Tips

Preparing for the Service

Before beginning, confirm the following:

- The hair has arrived and is prepped.
- All tools and supplies needed for installation are ready.
- Any applicable tools and supplies have been prepped for the service.

Coloring

Color the hair prior to installation, whether you are coloring the client's natural hair or the extensions.

Washing

Shampoo the client's hair thoroughly using a clarifying shampoo to remove all product residue and buildup, ensuring the scalp and hair are completely clean before installation.

Conditioning

Apply conditioner only from the midshaft to the ends to avoid premature slippage.

Drying

Blow-dry the hair completely and, if necessary, smooth the roots with a flat iron to ensure the hair is 100% dry and ready for installation.

Application



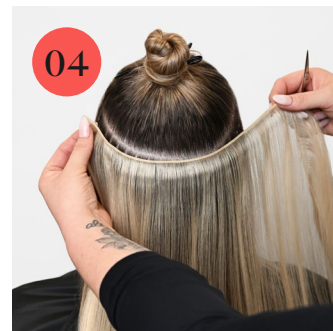
Section the hair into a T-shaped parting, starting the installation at the nape of the neck. For weft installs, begin your T-shaped parting with a slight U-curve. Determine the client's perimeter based on their hair density.



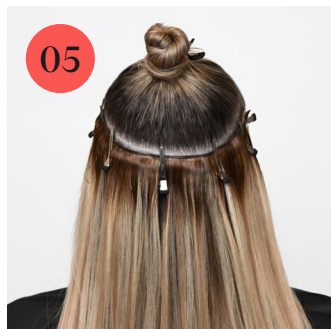
Starting at the nape, install a row of silicone beads to serve as anchor points for attaching and sewing on the weft.



Each beaded subsection should be approximately 1 1/2 to 2 times the width of the silicone bead, forming a horizontal rectangular subsection.



Measure the weft to match the length of the beaded row and cut. Depending on the client's hair density, there may be an option to stack up to three wefts.



Use Mini Clips to attach the weft(s) to the beaded row, ensuring proper alignment.



Once the weft(s) is secured, prep the needle and thread. Thread the needle and secure it with a double knot. The thread length should be three times the length of your row.



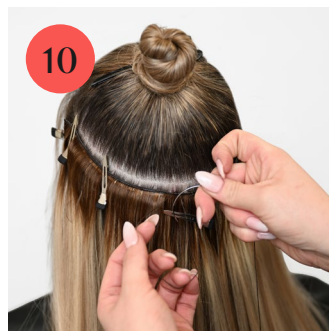
Starting on the left side, pass the needle and thread through the top-left side of the first subsection (not the bead). Leave 2" of thread free before pulling through completely, then create a double knot to secure the first anchor point.



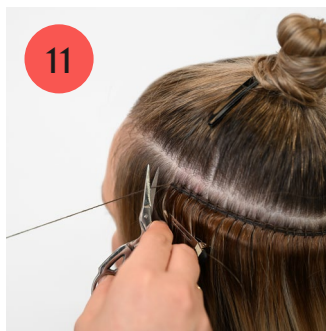
To begin installation, still on the left side, create the first anchor point by securing two knots on the left and two knots on the right.



Weave through the top-left subsection and pull the thread through, leaving a loop. Pass the needle through the loop, then pull upward while holding the weft down to tighten and create the first knot.



Continue repeating the above step, sewing from left to right with a single stitch (one knot on the left, one knot on the right) for the remaining subsections. Keep in mind the 2-3 anchor points, depending on the length of the row.



The end of the row will be secured with an anchor point, doubling stitching on each side of the subsection. Leave about 2" of thread, cut, and knot three times to avoid running. Begin the next row following the steps above.

PRO TIP

Each row will have 2-3 anchor points. An anchor point consists of a double stitch on the left and right sides of the subsection. Anchor points should be positioned at the start of the row, the end of the row, and, for wefts longer than 4", in the middle of the row.